

.....

LOKNATH ENGINEERING

Conveyor Manufacturer & Exporter

ISO 9001 : 2000 Certified Company



Engineers Behind The Ceramic, Pharmaceutical, Refractory and
Tea/Leather/Agro/Coal Industries

.....



Infrastructural Style sheet Guide

.....

Infrastructural Style sheet Guide

Loknath Neo Systems Private Limited

and

Loknath Engineering

28/6/7 Tollygunge Circular Road , (3-A Mezzanine Floor)

Khan Building , Kolkata - 700053

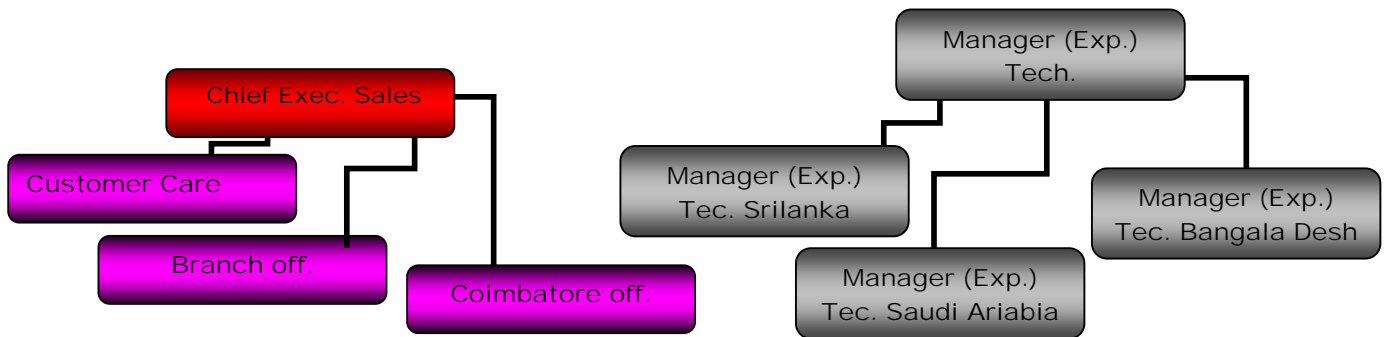
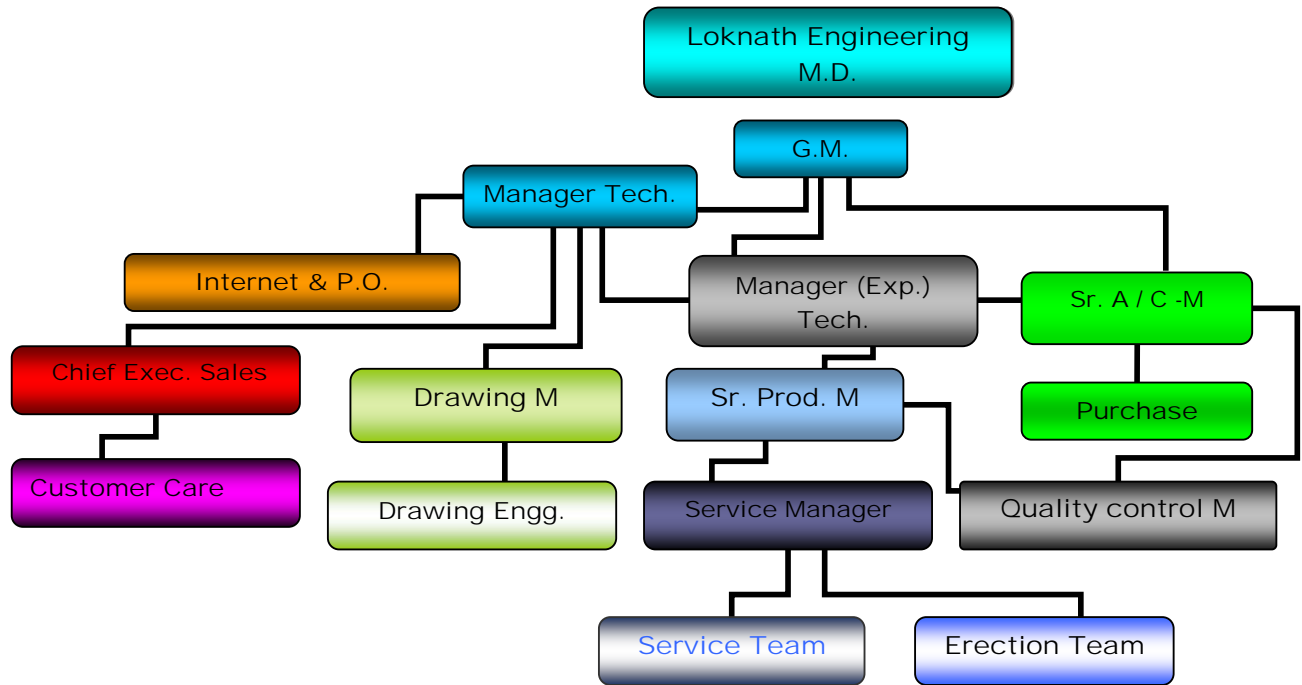
Telephone + 91 – 33 – 2400-8055/8061

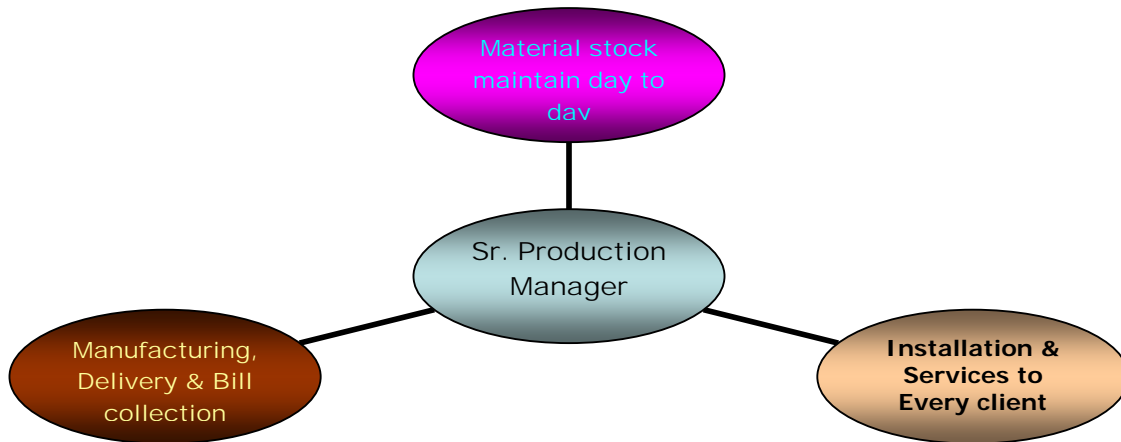
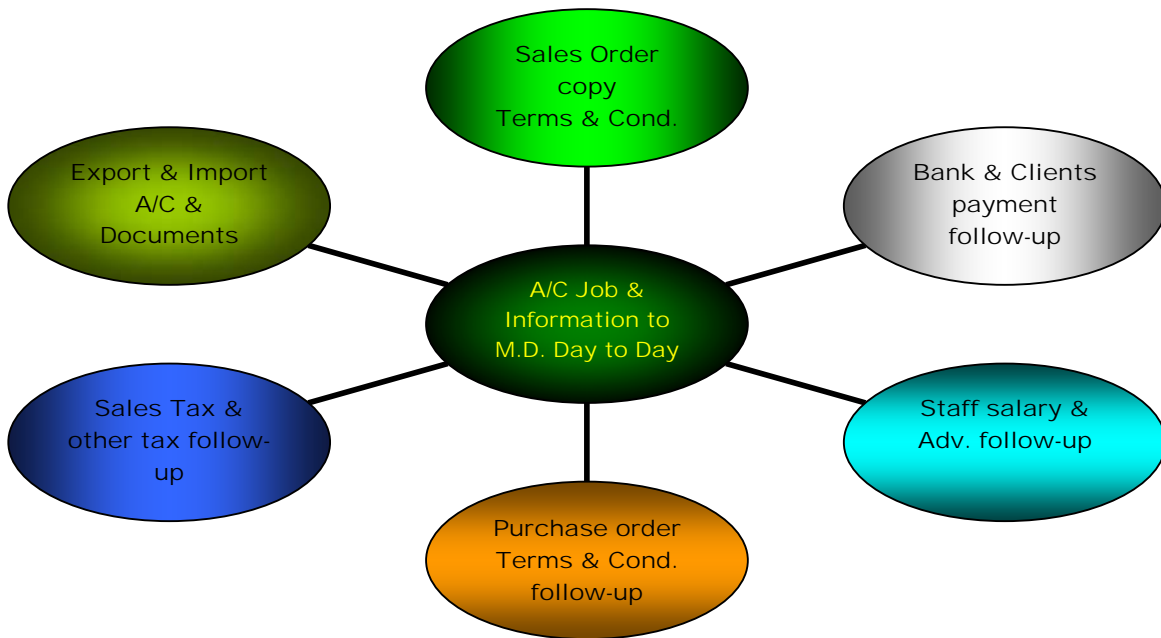
Fax :- +91-33-24026962

www.loknathengineering.co.in

customercare@loknathengineering.co.in







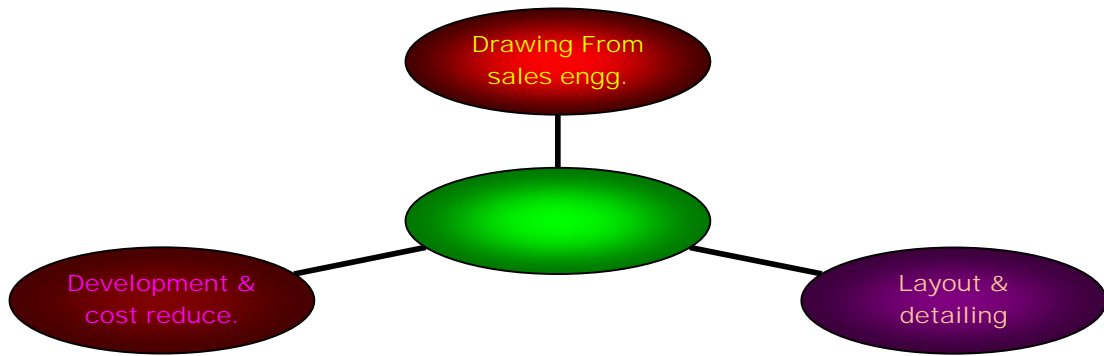


Table of Contents (Index)

	<u>Sections</u>	<u>Page Numbers</u>
• Company Infers teacher		
Company Profile	1	g
What we Manufacture	2	j
A Few of our Prestigious Customers	3	k
Auto-motion	4	l
Annexure	5	m
Address for Correspondence	6	o

1



INTRODUCTION COMPANY PROFILE

We have pleasure to introduce you **LOKNATH Mono-O-Veyor & Mono-O-Super** at a low cost, an easy, most economical, exceptionally efficient conveying system that can be capable to solve all type of material handling problems for years together and this is first time in Asia that we introduce modern technology for Overhead Conveying system. This system has been applied in different industries, some of them are Tea processing, Leather processing, Automobiles, Cement & Chemical etc. This installation proved 50% cost saver, maintenance and service life, also a valuable floor space saver help to reduce workmen fatigue and increase labor productivity that ensure quick payback and low down time.

We are one of the Premier Manufacturer and Exporters of all type of Conveyors like Overhead Conveyors, Conveyor Belts, Slat Conveyors, Roller Conveyors and Floor Conveyors. Since our inception, the Company has been moving at a great speed and today we are the undisputed leader in the realm of our activity. The secret of our success lies in our innovative products and our constant striving to enhance the quality of our products. We are proud to have one of the best infrastructural facilities supported by our team of dedicated and committed professionals. We are open to all changes and innovations that have been taking or will take place in the sphere of our activity.

This has been proved as one of the Most Competitive Technology and at par with Latest Technological Structures from other Modern Manufacturing Agencies.

The persons who were involved in designing & manufacturing of different types of Overhead Conveyor systems in most of the reputed company in India are now with us.

ICON KEY

	Prestigious Customers
	Automation
	Sponge Iron Plant
	Special Smokeless Fuel Plant

SALIENT FEATURES

1. Gyroscopic couple is controlled by the guide wheel & load wheel of same diameter which control the vibration when moves through different vertical & horizontal bends. It is absolutely a proven system to absorb any type of vibration or shock.
 2. The trolleys, link axle, which are used in the system, are mainly made of alloy steel of EN & EDD qualities of C.R.C.A. sheets.
 3. The wheel are made specially high carbon, high manganese steel balls which give trouble free life long service of wheel without having any further maintenance while in function.
 4. Drive
The overhead conveyor system moves by caterpillar or sprocket type drive unit with e a 1 HP or 2 HP TEFC Motor Transmits the motion to a speed gear box through 'V' Belts. The output shaft of the speed Gearbox fitted with a shear pin sprocket finally transmits motion to dog-chains the directly engage two sets of trolleys at a time which permit a relative motion between engaged trolleys distributing Drive power equally and automatically to monorail continuous movement of the system.
 5. Conveyor Chain
Mono–O–Veyor & Mono–O–Super Bi-planner type Three wheel, Five wheel & Four wheel chain & trolleys with 15", 12", 10", 9" & 6" pitch. Working tension of the chain is 350kgs & 520 kgs., and the breaking load would be 3500kgs – 5200 kgs.
 6. We have dedicated service engineers to take care of any kind of service oriented job as well as revamping of existing installations of overhead conveyor and any other related equipment.
 7. Loknath manufactured by Mono–O–Veyor (3 wheel Type) & Mono–O–Super (4 wheel Type) capable of handling loads per Hook 40 to 60 kgs, & 110 kgs, respectively. And we imported heavy-duty monorail type of X- 348 capable of 90 kgs. , X- 458 capable of 180 kgs. , X- 678 capable of 500 kgs. Each trolley.
 8. And more details with technical know how as per your conveyor enquiry so please logon our website: - www.loknathengineering.co.in, www.loknathengineering.com or www.lne-con-sy.com ,for your details pacific enquiry Click our product ranges, where you will find the type of various Overhead/Floor Conveyors systems manufactured by us. We suggest you to provide us information in connection with your requirement,
-

-i-

Lokn



2

WHAT WE MANUFACTURE

- 1) MINERAL PROCESS MACHINES/PLANTS
Apron Feeder, Vibrating Feeder, Disc Feeder, Reciprocating Plate Feeder, Screw Feeder, Conveyors, Elevators, Jaw Crusher (Single & Double Toggle), Jaw Granulator, 2 – Roll Crusher, 4 – Roll Crusher, Rock Sizes (Impact Breaker), Swing Hammer Crusher, Swing Hammer Pulverize, Storage Bins, Dust Collector, Rotary Air Lock Valve, Bag Filters, Rotary Screen, Vibrating Screen, Combined Grinding Plants, 2–Rotor Swing Hammer/Crusher Mill, Vibrating Fine Grinding Mill.
 - 2) REFRACTORY/STONEWARE PIPE MACHINES/PLANTS
Conveyor, Jaw Crusher, Jaw Granulator, Swing Hammer Mill, Bucket Elevator, Vibratory Screen, Rotary Screen, Screw Feeders,
 - 3) COAL PREPARATION MACHINES/PLANTS
Apron Feeder, Mechanical Vibrating Feeder, Reciprocating Plate Feeder, Single Roll Coal Crusher, Impact Coal Buster, Conveyors, Swing Hammer Coal Crusher, Rotary Ring Coal Pulverize, 2 – Roll Coal Crusher, 4 – Roll Coal Crusher, Elevators Storage Bins, Rotary Airlock Feeder, Vibrating Screens, Open Bottom Coal Crusher.
 - 4) SPECIAL SMOKELESS FUEL PLANT OF 100 TPD CAPACITY
Inclined Belt Conveyor, Single Roll Crusher, Vibrating Screen, Apron Conveyor, Slide Gate, Piping Work, Electrical Work.
 - 5) CERAMIC MACHINES/PLANTS
Jaw Crusher, Jaw Granulator, 2 – Roll Crusher, 4 – Roll Crusher, Combined Grinding Plant, Conveyor, Edge Runner Mill, Swing Hammer Mill, Pan Mill Bucket Elevator, Storage Bin, e), Vibrating Screen, Electro Magnetic Separator,
 - 6) FERTILIZER MIXING AND GRANULATION PLANTS
Belt Conveyors, Vibrating Screens, Swing Hammer Mills, Bucket Elevators, Storage Bins, Paddle Mixer, Rotary Drier, Rotary Cooler, Rotary granulators, Chain Mill, Cage Mill, Swing Hammer Pulverize, 2 – Rotor Swing Hammer Mill,
 - 7) FOUNDRY SAND PREPARATION MACHINES/PLANTS
Crusher, Vibrating Sieve, Belt Conveyor, Slat Conveyor, Hinged Belt Conveyor, Circular Conveyor, Roller Conveyor, Core Sand Mixer.
 - 9) OUR RANGE
Mineral Crushing, Grinding, Screening and Conveying Plants, Ceramic and Refractory Machines/Plants, Coal Preparation and Handling Plants, Metal Processing Plants, Fertilizer Process Plants, Sand Preparation Plants, Poultry and Cattle-Feed Plants, Refuge and Industrial Waste Preparation Plants, Sponge Iron Plants etc.
-

! A FEW OF OUR PRESTIGIOUS CUSTOMERS

Cement Plants:-

01. A.C.C. Cement.
02. Grasim Cement.
03. J.K. Cement.
04. OCL Cement.

Coal Mines:-

01. Central Coal Mines.
02. C.C.L.
03. N.C.L.
04. S.E.C.L.

Electronics:-

01. Exide India Limited.
02. Philips India Ltd.
03. Polar Fan.
04. Webel Electronics
05. Orient Fan.
06. Khaitan Electrical Ltd.

LPG Bottling Plant :-

01. ABR Petro Product Ltd
02. Jay Bharat.
03. Sivam Gas.
04. Vervy Containers.

Others:-

01. A.C.E. Glass.
02. D.C.C. (Dankuni)
03. DRCC.
04. ELECON.
05. F.C.I. (Talc her)
06. Fenner India Ltd.
07. Gamon Turnkeys Ltd.
08. Hindustan Lever Ltd.
09. Indian Charge Chrome Ltd.
10. Indian Rare Earths Ltd.
11. MAMC.
12. McNally Bharat
13. Philips Carbon Limited.
14. Shalimar Industries.
15. Tata Chemicals Limited.
16. T.R.F.
17. UCIL.
18. ELFA Industries (P) Ltd.
19. Net Mech Founder Pvt. Ltd.
20. Adree Hitech Pvt. Ltd.
21. IFB Agro.
22. Sumit Enterprise.
23. Monalisa Bottling Industries Pvt. Ltd.
24. HI-Tech Investment Castings Ltd.,

Our Re-Sealers

Powder Coating plant & pent Shop :-

1. Gallant Erumpent Pvt. Ltd. (Kolkata)
2. Weldmech Engineering.
3. B. Suraash (CAPRI).
4. Technomaint Services (Puna)
5. Chitragupta Industries (Puna)
6. Rohini Enterprise (Siliguri)
- 7.

Thermal Power Plants:-

01. C.E.S.C.
02. Surathgarh Thermal Power.
03. Kolaghat Thermal Power.
04. NTPC (Farakka).

Steel & Aluminum:-

01. Electro Steel Castings Limited.
02. INDAL.
03. Jai Balaji Sponge Ltd.
04. Maheshwari Ispat Ltd.
05. NALCO.
06. Shri Ramrupai Balaji Steels Limited.
07. TISCO (Joda Mines).

Tea Estates:-

01. Amgoorie Tea Estate.
02. Borbam Tea Estate.
03. Borpatra Tea Estate.
04. Borsillah Tea Co.
05. Chandanpur Tea (Vikram)
06. Food Hill Agro Pro. Ltd.
07. Hanuman Agro.
08. Hattikhira Tea Estate.
09. Jamguri Tea Estate.
10. Kailashpur Tea Estate.
11. Koomber T.E. (Goodricke)
12. Mintri Tea & Co. Pvt. Ltd.
13. New Manas Tea Estate. (P) Ltd.
14. Oodlabari Tea.
15. Parag Tea & Agro.
16. P.C.M. Tea.
17. Rajina Tea Co.
18. Ramjimohan Tea Estate.
19. Sakomato Tea.
20. Sandeep Tea Estate.
21. Sarat Tea Estate.
22. Sona Tea Estate.
23. Soongachi Tea.
24. Terai Tea.
25. Topline Tea.
26. Every Assam Ele.
27. Horujan Tea.
28. Dalowjan Tea Estate.
29. Bijulee Tea Pvt. Ltd.
30. Meen glass Tea Estate.
31. Bhubri Ghat Tea Est.
32. Casalton Tea Estate.
33. Pengreegarh Tea Company.
34. Mcleod Russel India Limited.
35. Chanimai Tea Co.
36. Nil Geri Tea Est. (South India)
37. Chalsa Tea Estates.
38. Hattikhira Tea Estate.
39. Pengreegarh Tea Company.
40. Sorola Tea Estate.
41. Kailashpur Tea Estate.

Leather Industries :-

1. Althaf Shoes Co.
2. Navdul Wajid & Co.

WE EXPORT

1. Srilnaka
2. Saudi Arabia
3. Bangla Dash ,
4. Tanzania

Bottling Plant

1. I.F.B
2. Coca cola

Section

4

 **AUTO-MOTION**

<u>Sl. No.</u>	<u>Name of the Customer</u>	<u>Name of the Machine</u>	<u>Quantity</u>
01.	Goodricke A/C Amgoorie India Limited.	1. Overhead Conveyor	18 Unit.
02.	Hanuman Texnit Industries Ltd.	1 Overhead Conveyor	02 Unit.
03.	Philips India Limited	Overhead Conveyor 1) Paint Shop 2) Picture Tube	01 Unit. 01 Unit.
04.	Associated Cement Company Ltd. / Sindri	Bag Carrying Conveyor Overhead Conveyor	01 Unit. 01 Unit.
05.	Orissa Cement Limited	Bag Carrying Conveyor	03 Unit.
06.	Polar Industries Ltd.	Fan Assembly & Tasting Conveyor	02 Unit.
07.	Terai Tea Company Ltd.	Overhead Conveyor Bucket E –O- Veyor	02 unit.
08.	T.R.F. – Kolkata	Erection & Commissioning of Conveyor Systems	Turnkey
09.	INDAL – Muri	Erection & Commissioning of Conveyor Systems	Bauxite Handling Plant
10.	Jay Engineering Works A/c., Usha Fan <u>LPG Handlings:-</u> ABR Petro Product Ltd Jay Bharat Sivam Gas Verny Containers Gallant Erumpent Pvt. Ltd.	Erection & Commissioning of Segmented Assembly Overhead Conveyor Overhead Conveyor Overhead Conveyor Overhead Conveyor Overhead Conveyor Overhead Conveyor	08 Nos. 01 Unit. 02 Unit. 02 Unit. 02 Unit. 01 Unit. 01 unit. 05 unit.

Annexure – I

LIST OF MACHINERY

<u>Name</u>	<u>Quantity</u>	<u>Name</u>	<u>Quantity</u>
12' Lathe Machine (6 dm capacity)	1 no.	80T High Speed Power Press	1 lot.
10' Lathe Machine	1 no.	100T High Speed Power Press	1 no.
06' Lathe Machine	1 no.	200T Deep Draw Power Press	1 no.
04 ' Lathe Machine	2 nos.	250T Deep Draw Power Press	1 no.
32 ' Stock Shaper Machine	1 no.		
1.5 ' Cap Radial Drill Machine	1 no.	125T Power Press	1 no.
1.5 ' Cap Pillar Drill Machine	2 nos.	100T Power Press	1 no.
		75T Power Press	1 no.
Power Saw Machine	1 no.	63T Power Press	4 nos.
Welding Machine	14 nos.	50T Power Press	3 nos.
Angle Grinder Machine	4 nos.	40T Power Press	5 nos.
Gas Cutting Sets	8 nos.	30T Power Press	1 no.
Pug Cutting Machine	4 nos.	20T Power Press	4 nos.
Chain Pulley Block 5–10 Ton Cap	6 nos.	10T Power Press	1 no.
Winch Machine 10 Ton Cap	1 no.	5T Power Press	2 nos.
Power Press 50 Ton Cap	1 no.	20T Hydraulic Press	3 nos.
Grander Attachment	2 nos.	Surface Grinder	3 nos.
Ball Press Machine	1 no.	8ft. Heavy Duty Lathe	1 no.
Screw Press Machine	3 nos.	6ft. Lathe	2 nos.
Steel Derrick 5T Cap	1 no.	4ft. Lathe	4 nos.
Diesel Generator 15 KVA	3 nos.	Drill	4 nos.
Measuring Tools (micrometer, vernier, height gauge etc.)	1 lot.	Circle Cutting Machine	1 no.
Misc. equipment for Fabrication & Fitting work	1 lot.	Shoppe Machine	1 no.

Annexure – II

LIST OF MANAGEMENT PERSONNEL

1. Mrs. S. NASKAR Pro. & DIRECTOR OF (LNE & LNS (P) LTD.)
Diploma in Mechanical Engineering
business from 2000. Above 06 Years
Experience in Fabrication of Structural
and Mechanical Equipment.
 2. Mr.N. NASKAR DIRECTOR (LNS (P) LTD.) & C.E.O.(LNE)
Diploma in Mechanical Engineering
from Telco, Engaged in business from
1996. Above 11 Years Experience in
Industrial Engineering with Vinar Systems.
 3. Mr. VINOD KHANNA DIRECTOR (LNS (P) LTD.)
Diploma in Mechanical Engineering,
Engaged in business of Lamination &
Press jobs from 1989. Above 15 Years
Experience in Industrial Engineering
 4. Mr MUKESH KHANNA DIRECTOR (LNS (P) LTD.)
Diploma in Mechanical Engineering,
Engaged in business of Lamination &
Press jobs from 1984. Above 19 Years
Experience in Industrial Engineering
 5. Mr. D. Bose G. MANAGER – PROJECT
25 Years Experience in
Conveyor Systems.
 6. Mr. D.DAS STRUCTURAL & MECHANICAL
Above 6 years Experience in
Fabrication of Structural and
Mechanical Equipment.
 7. Mr. N.K. GUHA DESIGN AND PROJECT
25 years of CONSULTANT
Experience in Design and
Development of Tailor made
material handling equipment
 8. Mr. G. DAY DESIGNER AND DEVELOPER
 9. Mr. N. NASKAR MARKETING MANAGER (Tech.)
 10. Mr. S. MONDAL FACTORY MANAGER
-

CONTACT US AT:-**1) Registered Office:-**

26, Taramoni Ghat Road
P.O.: - Paschim Putiary
Kolkata – 700 041
Phone # +91-33-2402-1779
Fax: - +91-33-24026962
Mobile # (0) 9433207176, 9432579779

2) Correspondent Office:-

28/6 & 7, Tollygunge Circular Road
3A Mezzanine Floor (Khan Building)
Kolkata – 700 053
Telefax # +91-33-2400-8061/2402-6962
Telefax # +91-33-2400-8055
Mobile # (0) 9433207176, 9432579779

3) Website:-

www.indiamart.com/loknathengineering
www.loknathengineering.com
www.loknathengineering.co.in
www.lne-con-sy.com

4) E – Mail ID:-

conveyor.sales@loknathengineering.co.in
enquiry@loknathengineering.co.in
service@loknathengineering.co.in
naskar@loknathengineering.co.in

loknath_engg@yahoo.com
lne_con_sy@dataone.in
n_naskar@dataone.in

Branch office :-

1. Loknath Engineering
8, Road No.: -11 Block – C
Section # 6 Mirpur Pallabi
Dhaka -1216
Bangladesh
Ph. 0088 -02 9000650,
Mob. +8801815400649
2. Lanka Loknath Engineering
72/4 A, Maha Bothgamuwa
Angoda, Colombo
Sri Lanka
Ph.
Mob. 0094777376785,
+94777386547